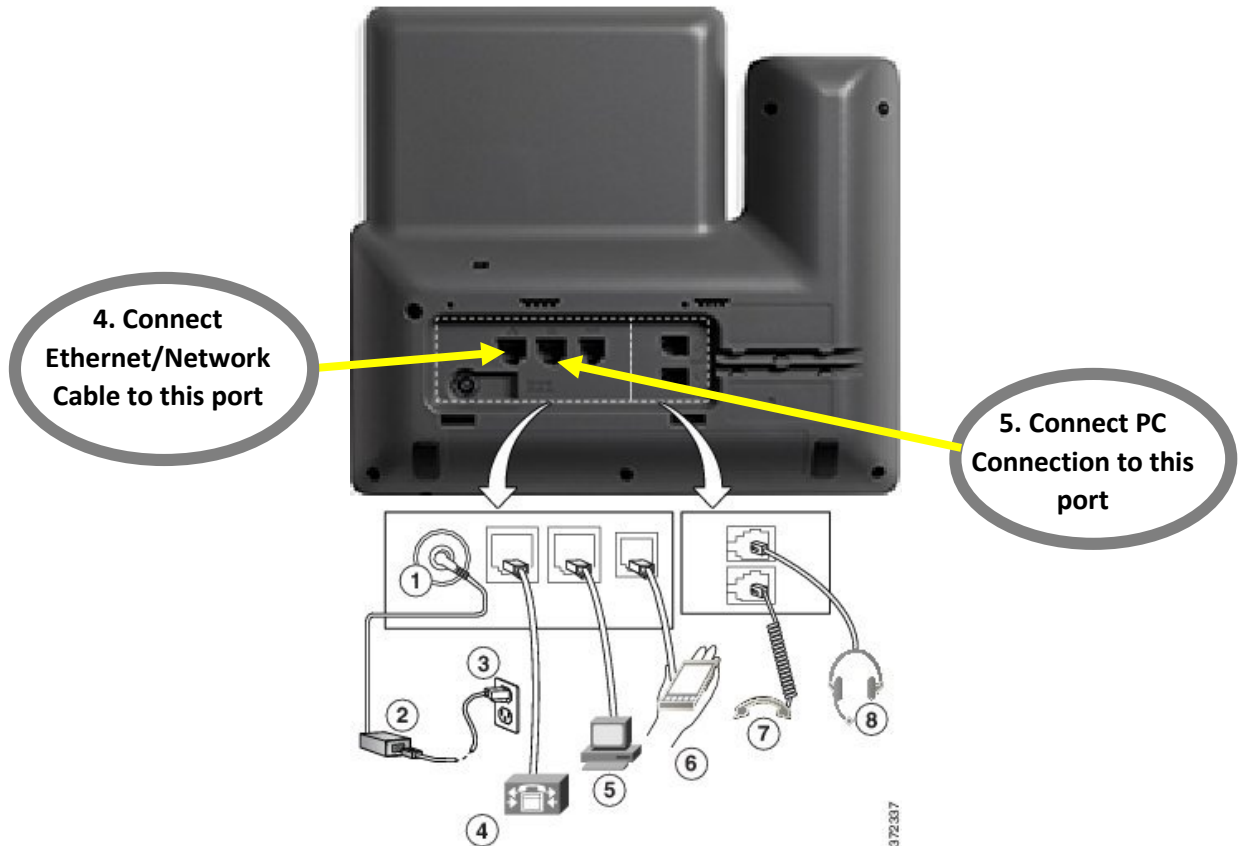


# Cisco IP Phone 8811- Set up connections

The following sections describe the Cisco IP Phone 8811 attributes.

## Phone Connections

Connect your phone your organization's IP telephony network as shown in the following diagram.



1	DC adapter port (DC48V).	5	Access port (10/100/1000 PC) connection.
2	AC-to-DC power supply (optional).	6	Auxiliary port.
3	AC power wall plug (optional).	7	Handset connection.
4	Network port (10/100/1000 SW) connection. IEEE 802.3at power enabled.	8	Analog headset connection (optional).



**Note**

The Cisco IP Phone 8811 does not support the Cisco IP Phone 8800 Key Expansion Module.